

ACTA1/alpha-actin Antibody (C-term)
Affinity Purified Rabbit Polyclonal Antibody (Pab)
Catalog # AP17487b**Specification**

ACTA1/alpha-actin Antibody (C-term) - Product Information

Application	WB, IHC-P,E
Primary Accession	P68133 , P68136
Other Accession	P60010 , P68136 , P68135 , P68137 , P68134 , P68139 , P68138 , P63269 , P63268 , P63267 , P63270 , Q5E9B5 , A2BDB0 , P63259 , P63260 , P63261 , Q5ZMQ2 , P63258 , P04751 , P68035 , P68033 , P68032 , P68034 , Q3ZC07 , Q93400 , P60711 , P29751 , Q6QAO1 , P60710 , Q4R561 , P60709 , P48975
Reactivity	Human, Rat
Predicted	C.Elegans, Drosophila, Xenopus, Chicken, Bovine, Mouse, Rabbit, Zebrafish, Hamster, Horse, Monkey, Pig, Sheep, Yeast
Host	Rabbit
Clonality	Polyclonal
Isotype	Rabbit IgG
Antigen Region	189-217

ACTA1/alpha-actin Antibody (C-term) - Additional Information**Other Names**

Actin, alpha skeletal muscle, Alpha-actin-1, ACTA1, ACTA

Target/Specificity

This ACTA1/Alpha-actin antibody is generated from rabbits immunized with a KLH conjugated synthetic peptide between 189-217 amino acids from the C-terminal region of human ACTA1/Alpha-actin.

Dilution

WB~~1:1000

IHC-P~~1:25

E~~Use at an assay dependent concentration.

Format

Purified polyclonal antibody supplied in PBS with 0.09% (W/V) sodium azide. This antibody is purified through a protein A column, followed by peptide affinity purification.

Storage

Maintain refrigerated at 2-8°C for up to 2 weeks. For long term storage store at -20°C in small aliquots to prevent freeze-thaw cycles.

Precautions

ACTA1/alpha-actin Antibody (C-term) is for research use only and not for use in diagnostic or therapeutic procedures.

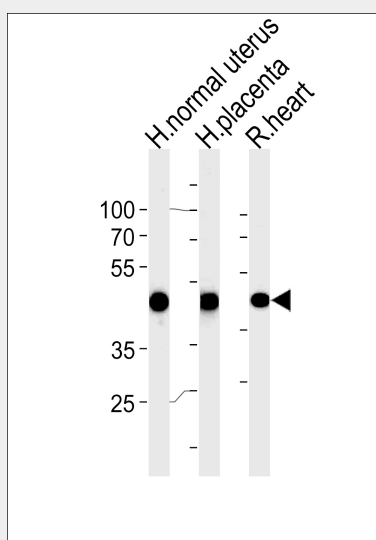
ACTA1/alpha-actin Antibody (C-term) - Protein Information

ACTA1/alpha-actin Antibody (C-term) - Protocols

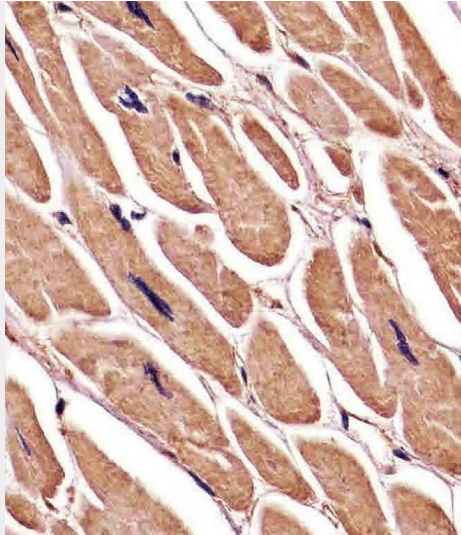
Provided below are standard protocols that you may find useful for product applications.

- [Western Blot](#)
- [Blocking Peptides](#)
- [Dot Blot](#)
- [Immunohistochemistry](#)
- [Immunofluorescence](#)
- [Immunoprecipitation](#)
- [Flow Cytometry](#)
- [Cell Culture](#)

ACTA1/alpha-actin Antibody (C-term) - Images



ACTA1/α-actin Antibody (C-term) (Cat# AP17487b) western blot analysis in human normal uterus and placenta, rat heart tissue lysates (35ug/lane). This demonstrates the ACTA1/α-actin antibody detected the ACTA1/α-actin protein (arrow).



AP17487b staining ACTA1/alpha-actin in human heart tissue sections by Immunohistochemistry (IHC-P - paraformaldehyde-fixed, paraffin-embedded sections). Tissue was fixed with formaldehyde and blocked with 3% BSA for 0.5 hour at room temperature; antigen retrieval was by heat mediation with a citrate buffer (pH6). Samples were incubated with primary antibody (1/25) for 1 hour at 37°C. A undiluted biotinylated goat polyvalent antibody was used as the secondary antibody.

ACTA1/alpha-actin Antibody (C-term) - Background

The product encoded by this gene belongs to the actin family of proteins, which are highly conserved proteins that play a role in cell motility, structure and integrity. Alpha, beta and gamma actin isoforms have been identified, with alpha actins being a major constituent of the contractile apparatus, while beta and gamma actins are involved in the regulation of cell motility. This actin is an alpha actin that is found in skeletal muscle. Mutations in this gene cause nemaline myopathy type 3, congenital myopathy with excess of thin myofilaments, congenital myopathy with cores, and congenital myopathy with fiber-type disproportion, diseases that lead to muscle fiber defects.

ACTA1/alpha-actin Antibody (C-term) - References

Kim, E.Y., et al. Am. J. Physiol. Renal Physiol. 299 (3), F594-F604 (2010) : Haigh, S.E., et al. Neuromuscul. Disord. 20(6):363-374(2010) Yu, G., et al. J Clin Neurosci 17(6):766-769(2010) Yu, C.H., et al. PLoS ONE 5 (7), E11878 (2010) : Licastro, F., et al. Curr. Pharm. Des. 16(7):783-788(2010)